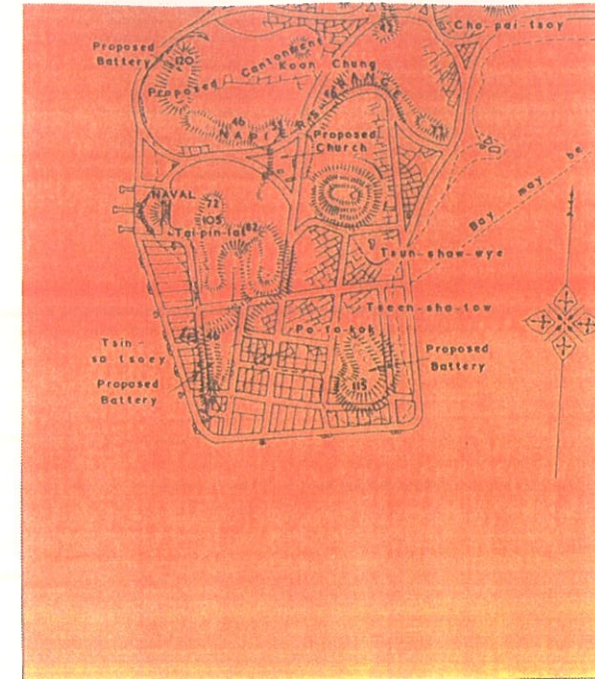




(a) View (1860'S) from Signal Hill westwards across Tsim Sha Tsui Bay and the Kowloon Plain (Hacker 1997)



(b) Detail of Map of Kowloon, 1863: Both villages of Tsim Sha Tsui and Cho Pai-tsoy are marked on the map. The map shows clearly the topography of early Tsim Sha Tsui. (Empson 1992: 178)



(c) The proposed alignment (1924 map out of Empson 1992: 181)

Maps reproduced with permission of The Director of Lands, (C) Hong Kong Government.

FILENAME: g:\env\proj\fact\23573\drawings\3rd_eia-v8\heritage\FIGURE12-1a.dgn

| REV | DATE | BY | SUB | APP | DESCRIPTION |
|-----|-----------|----|-----|-----|------------------------|
| △ | | | | | |
| △ | | | | | |
| △ | | | | | |
| △ | | | | | |
| △ | | | | | |
| △ | 30MAY2003 | SW | FC | ST | EIA REPORT |
| △ | 7MAR2003 | SW | FC | ST | EIA REPORT (2ND DRAFT) |
| △ | 11OCT2002 | SW | FC | ST | EIA REPORT (1ST DRAFT) |

| | |
|-------------|-------------|
| DESIGNED BY | SW |
| DRAWN BY | RL |
| CHECKED BY | FC |
| IN CHARGE | ST |
| DATE | 30 MAY 2003 |

New Railway Projects 新鐵路策劃

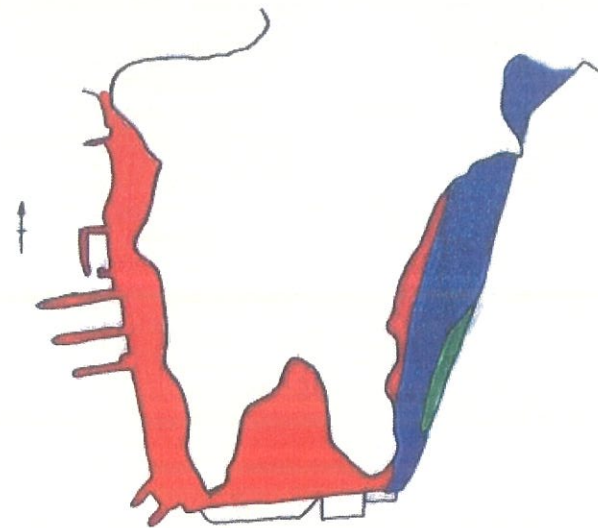
Ove Arup & Partners Hong Kong Limited

ARUP

KOWLOON SOUTHERN LINK KSL GSA-5100 EIA & ASSOCIATED SERVICES

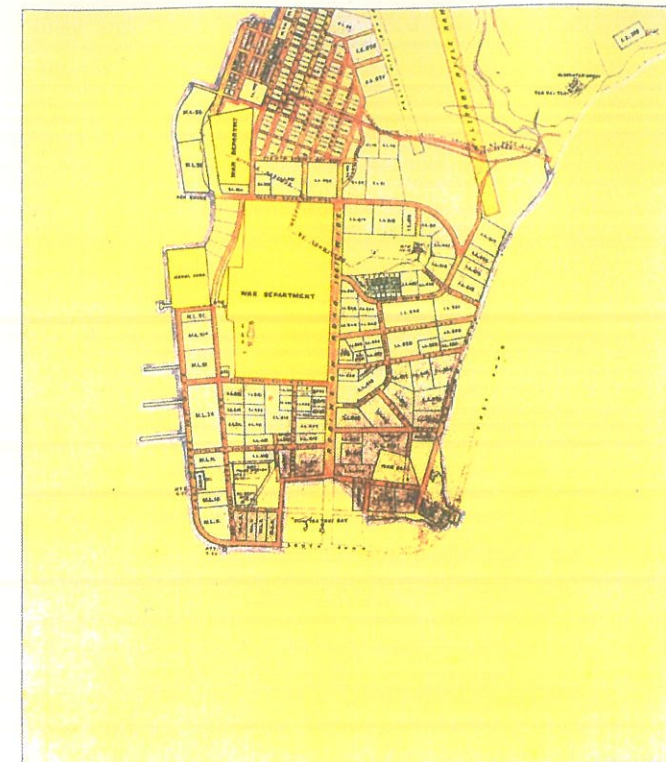
ARCHAEOLOGICAL BACKGROUND

| | | | |
|----------------|------------|---------------|--|
| CADD FILENAME | | CADD DATE | |
| | | 30 MAY 2003 | |
| SCALE | | N / A | |
| DRAWING NUMBER | | FIGURE 12-1-1 | |
| SHEET NO | STAGE CODE | REV | |
| 1 OF 2 | P | C | |



▲ Pre-1904
 ▲ Pre-1924
 ▲ Pre-1945

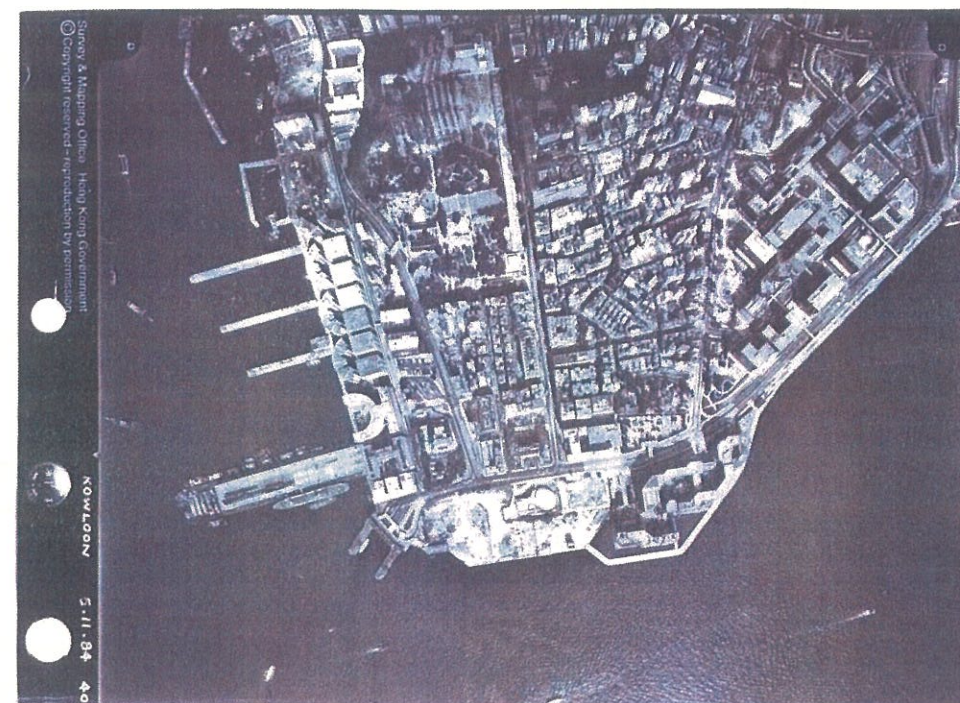
(d) Early reclamations in the Tsim Sha Tsui area



(e) Detail of "Plan of Kowloon"; 1887 in which part of Tsim Sha Tsui Bay Has already been reclaimed. (Empson 1992: 179)



(f) Aerial Photograph taken In 1949
(Y 01584, Sheet No. 11, 8600', 17-06-49)



(g) Aerial Photograph taken In 1984
(56885, 05-11-84, 4000')

| △ | | | | | | | | | | | | | | | | | | | |
|-----|------|----|-----|-----|--|----------|---------|-------|------|-------------|--|----------|---------|-------|------|-------------|--|--|--|
| △ | | | | | | | | | | | | | | | | | | | |
| △ | | | | | | | | | | | | | | | | | | | |
| △ | | | | | | | | | | | | | | | | | | | |
| △ | | | | | | | | | | | | | | | | | | | |
| △ | | | | | | | | | | | | | | | | | | | |
| △ | | | | | | | | | | | | | | | | | | | |
| △ | | | | | | | | | | | | | | | | | | | |
| REV | DATE | BY | SUB | APP | | DESIGNER | CHKD BY | APP'D | DATE | DESCRIPTION | | DESIGNER | CHKD BY | APP'D | DATE | DESCRIPTION | | | |
| | | | | | | | | | | | | | | | | | | | |
| | | | | | | | | | | | | | | | | | | | |
| | | | | | | | | | | | | | | | | | | | |
| | | | | | | | | | | | | | | | | | | | |
| | | | | | | | | | | | | | | | | | | | |
| | | | | | | | | | | | | | | | | | | | |
| | | | | | | | | | | | | | | | | | | | |
| | | | | | | | | | | | | | | | | | | | |
| | | | | | | | | | | | | | | | | | | | |

| | |
|-------------|-------------|
| DESIGNED BY | SW |
| DRAWN BY | RL |
| CHECKED BY | FC |
| IN CHARGE | ST |
| DATE | 30 MAY 2003 |



New Railway Projects
新鐵路策劃

Ove Arup & Partners Hong Kong Limited **ARUP**

| | |
|---------------------------|----------------|
| CADD FILENAME | CADD DATE |
| SCALE | 30 MAY 2003 |
| DRAWING NUMBER | N / A |
| ARCHAEOLOGICAL BACKGROUND | |
| SHEET NO | STAGE CODE REV |
| 2 OF 2 | P C |